

Annual Report 2024/25



*Diversifying Choices
Securing Livelihoods*



**Local Initiatives for Biodiversity,
Research and Development (LI-BIRD)**



*Diversifying Choices
Securing Livelihoods*

Annual Report

2024/25

Registration No.: 217/052/053 (DAO, Kaski) | 3394 (SWC)

Citation: LI-BIRD (2025). Annual Report 2024/25. Pokhara, Nepal: LI-BIRD.

Copyright © 2025 All Rights Reserved.

LI-BIRD would appreciate receiving a copy of any material that uses this publication as a source. No use of this publication may be for any commercial purpose whatsoever without prior permission in writing from LI-BIRD.

Editorial team	Bishnu Dhakal, Ashma Aryal, Laxman Khatri, Mira Dhakal and Bharat Bhandari
Layout setting	Hem GC, LI-BIRD
Cover photo	Rice cultivation by farmers supporting their families and local communities.
Back cover	‘Jhumaro or Sama (Barnyard Millet)’, a local variety of Millet.
Photos	LI-BIRD Photo Bank
Icons used in infographics	www.flaticon.com



Annual Report 2024/25 can be downloaded at
<https://libird.org/annual-report-2024-25>

Scan to download PDF



ISSN: 1561-154X

CONTENT

MESSAGE FROM THE BOARD AND THE EXECUTIVE DIRECTOR	v
ABBREVIATIONS AND ACRONYMS	vi
GEOGRAPHICAL COVERAGE	vii
LI-BIRD AT A GLANCE	1
KEY HIGHLIGHTS of FY 2024/25	5
Overall programme portfolio	6
Major Achievements	9
KEY IMPACTS STORIES	24
Resurgence of Foxtail Millet (Kaguno) in Kaski	24
Conservation through Utilization: A Story of the Dhauligaad Agriculture Cooperative, Jumla	26
Shaping her own dream: A case of Rima Chaudhary	28
MAJOR ORGANIZATIONAL HIGHLIGHTS	30
National Agroecology Roadmap of Nepal	30
Registration of Landraces in National Seed System	32
INVESTING IN HUMAN RESOURCES	34
FINANCIAL HIGHLIGHTS 2024/25	36
PUBLICATIONS	41
DEVELOPMENT PARTNERS AND FUNDING AGENCIES FY 2024/25	43
EXECUTIVE BOARD 2023-2026	44



MESSAGE FROM THE BOARD CHAIRPERSON AND THE EXECUTIVE DIRECTOR

As we reflect on the achievement of another year of progress, we are pleased to share LI-BIRD's Annual Report for FY 2024/25. This report captures our accomplishments, outreach, outcomes of continued work with farming communities for improving livelihoods, conserving biodiversity, and strengthening resilient communities across Nepal.

LI-BIRD strengthened its leadership in agroecology, scaling up climate-resilient agriculture, promoting sustainable natural resource management, and empowering marginalized communities. Through close collaboration with farming communities and their institutions, government bodies, and development partners, the organization expanded climate-resilient and agroecological approaches that enhance food and nutrition security, and income diversification while conserving ecosystems and biodiversity. A strong emphasis was placed on inclusive participation, ensuring that women, youth, and vulnerable groups played central roles in decision-making and implementation.

The organization strengthened its research and evidence-based approaches, generating knowledge that informs policy and practice at local, national, and international levels. This year marked extensive policy engagement, including contributions to the development of Nepal's Agroecology Roadmap and the Pollination Management Strategy of Karnali

Province. By integrating traditional knowledge with scientific innovation, LI-BIRD continues to develop gender-responsive, practical, and sustainable solutions.

LI-BIRD remains committed to transparency, accountability, and organizational learning. Strengthening internal systems and governance practices continues to be our priority, ensuring integrity and effectiveness across all areas of work. Despite emerging challenges in the global funding landscape, the organization demonstrated resilience, maintaining a strong programme portfolio and effective delivery. In this evolving context, it is essential to ensure that LI-BIRD's work remains relevant, impactful, and aligned with changing development priorities.

We extend our sincere gratitude to our partners, donors, government agencies, and community members for their continued trust and collaboration. We also commend the dedication and professionalism of LI-BIRD staff, whose efforts have been central to this year's achievements.

As we look ahead, we remain committed to fostering innovation, strengthening partnerships, and scaling impact to contribute to a more sustainable, resilient, and equitable future in Nepal.



Pratap Kumar Shrestha, PhD
Chairperson, Executive Board

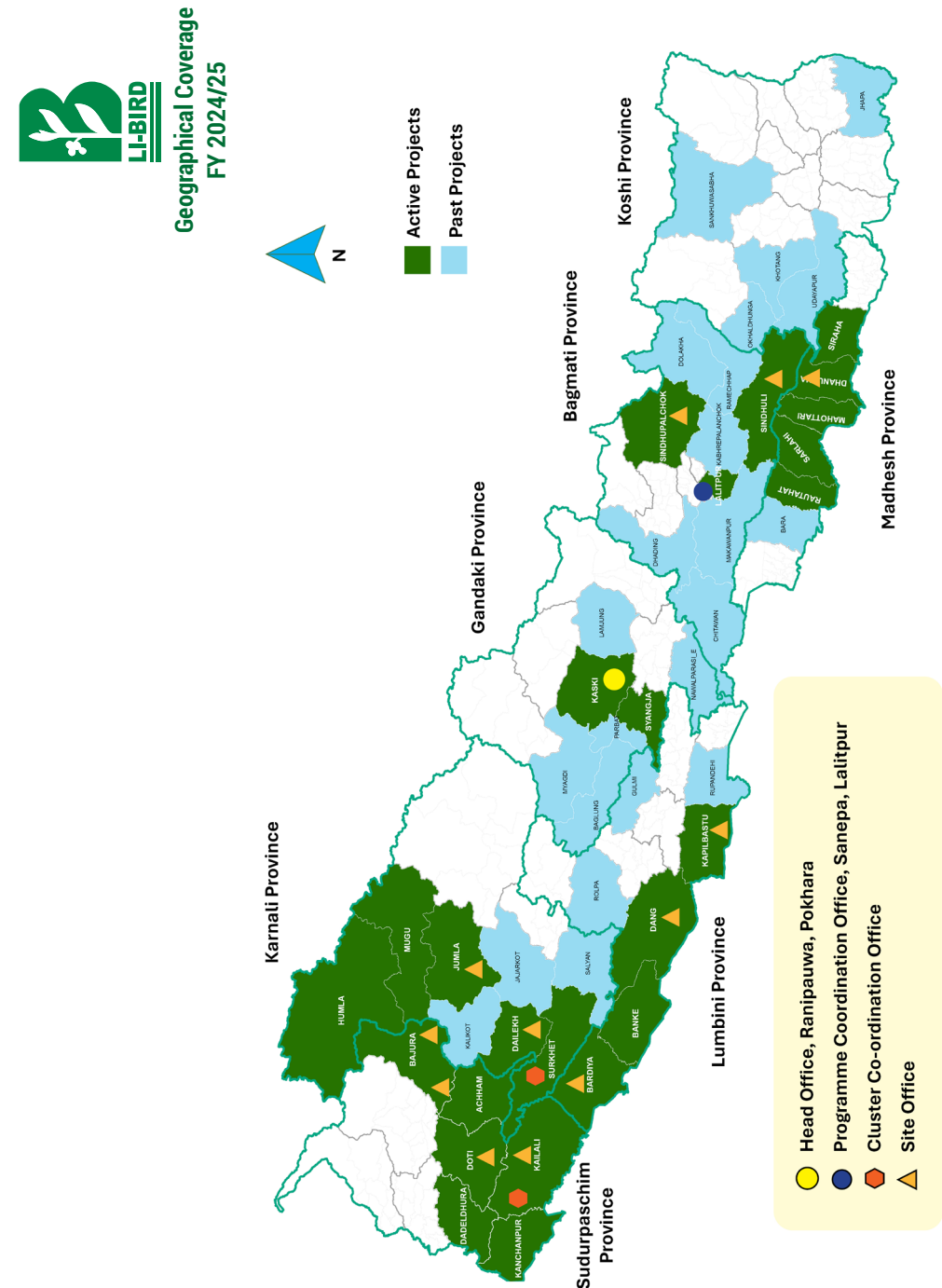


Bharat Bhandari
Executive Director

ABBREVIATIONS AND ACRONYMS

AFU	:	Agriculture and Forest University
BftW	:	Bread for the World
CAV	:	Climate Adaptive Village
CBO	:	Community-Based Organizations
CRA	:	Climate Resilient Agriculture
CSA	:	Climate-smart agriculture
CSB	:	Community Seed Bank
CSO	:	Civil Society Organization
DCA	:	DanChurchAid
EU	:	European Union
FAO	:	Food and Agriculture Organization
FCDO	:	Foreign, Commonwealth and Development Office
FFS	:	Farmer Field School
GALS	:	The Gender Action Learning System
GESI	:	Gender Equality and Social Inclusion
HH	:	Household
ICIMOD	:	International Centre for Integrated Mountain Development
IFOAM	:	International Federation of Organic Agriculture Movements
LDCRP	:	Local Disaster and Climate Resilience Plan
LLA	:	Locally Led Adaptation
LREP	:	Livelihood and Resilience Enhancement Project
MoALD	:	Ministry of Agriculture and Livestock Development
MoLMAC	:	Ministry of Land Management, Agriculture and Cooperatives
MSNP	:	Multi-Sector Nutrition Programme
NARC	:	Nepal Agriculture Research Council
NbS	:	Nature-based Solutions
NFS	:	Nutrition Field School
NORAD	:	Norwegian Agency for Development Cooperation
PIN	:	People in Need
PRERNA	:	Promoting Resilience and Enterprises Development through utilization of Natural Resource in Nepal
PwDs	:	Persons with Disabilities
RAIN	:	Resilience, Adaptation and Inclusion in Nepal
REALIZE	:	Renewable Energy Access for Livelihoods in Fragile Buffer Zones
RERAS	:	Renewable Energy for Resilient Agri-food Systems
SAKSHAM	:	Strengthening Capacity of Smallholder Farmers for Resilient Livelihoods
ToT	:	Training of Trainers
WFC	:	World Future Council
WFP	:	World Food Programme
WHH	:	Welthungerhilfe

GEOGRAPHICAL COVERAGE





LI-BIRD at
a **GLANCE** ▶▶

INTRODUCTION

Local Initiatives for Biodiversity, Research and Development (LI-BIRD) is a non-profit making non-governmental organization established in 1995 in Kaski, Nepal. LI-BIRD is committed to capitalizing on local initiatives for sustainable management of renewable natural resources to improve the livelihoods of rural poor and marginalized farmers, especially women. LI-BIRD continues to work along the research to development continuum. Throughout its existence, LI-BIRD has contributed for the development of several innovative methodologies and approaches for participatory research and development. It works through partnerships in development-oriented research in agriculture, forestry, climate change, biodiversity, and natural resources management. It has generated positive impacts on the livelihoods of rural poor and marginalized farmers through promotion of appropriate technological, social, and policy changes. LI-BIRD played an instrumental role in institutionalizing various approaches in the national systems of Nepal and expanded its outreach in selected countries in South Asia. LI-BIRD's expertise is increasingly sought by government and international agencies. Investing in knowledge, innovations, and solutions, building leaders, and developing new partnerships with public and private sectors continue to be LI-BIRD's main working philosophy and culture.

OUR VISION

LI-BIRD envisions a society where people are resilient, healthy, food and nutrition secure, and live in peace with dignity.

OUR MISSION

LI-BIRD's mission is to diversify choices and secure the livelihoods of farming communities, especially smallholder farmers, through innovative approaches to research and development in agriculture, climate change, biodiversity, and natural resources.

OUR IMPACT GOAL

LI-BIRD's goal is to contribute to reducing poverty by strengthening resilient agri-food systems, improving ecosystem health and services, and ensuring food, nutrition and income security of poor and marginalised farmers, especially women, who depend primarily on agriculture, biodiversity and natural resources for their livelihoods.

OUR CORE VALUES

Local Initiative: We value local knowledge and cultures, initiatives, innovations, and participation of local communities and institutions in all aspects of our work.

Integrity: We act consistently with our vision. We are honest, accountable and hold others accountable, and accept responsibility for our collective and individual actions.

Biodiversity: We believe in conserving biodiversity as an asset for building resilient agri-food systems, reducing poverty, enhancing livelihoods, aiding economic progress, and maintaining ecosystem health and services for present and future generations.

Investment for the future: We believe in investing in human and natural resources to safeguard the environment for a sustainable future.

Respect: We respect contributions, capabilities, opinions, and values of individuals, socially excluded groups, research and development partners, stakeholders, staff, and our members.

Diversity: We value diversity in terms of people, ethnicity, culture, geography, social norms, partners, staff, and our members.

PROGRAMMING PRINCIPLES

The following programming principles will inform and guide our programmes:

Principle 1: Demonstrate and deliver tangible benefits to target groups by ensuring environmental, gender, social, and economic safeguards for equitable impact.

Principle 2: Promote the participation of multi-sector/actor stakeholders in research and development to generate scalable solutions.

Principle 3: Recognise and promote local knowledge, resources, and locally-led innovations and solutions in all aspects of work.

Principle 4: Align actions with national and international priorities to contribute to relevant national and sustainable development goals.

Principle 5: Generate synergies and leverage resources for achieving efficiency and cost-effectiveness.

Principle 6: Create an enabling environment by empowering communities, institutions, and networks.

Principle 7: Build partnerships and alliances across relevant sectors and disciplines and cross-fertilise knowledge, innovations and solutions for wider uptake, use, and impact.

OUR IMPACT GROUPS

Our impact group is the population upon which our projects and programmes aim to have a positive impact. Our impact group is smallholder farmers, especially women, who depend on agriculture, biodiversity, and natural resources for their livelihoods. The lasting positive changes we can bring into their lives will determine the extent of our success.

OUR TARGET GROUPS

Our target group is the sub-set population or sub-groups within the impact group. Project and programme strategies may need to be customised specifically to meet the unique needs of the target group. Our action in this strategy period will focus on three sub-groups within the impact group. The unique needs of these sub-groups will determine the nature of actions we undertake with them.

- **Sub-Group 1: Natural resource-dependent communities, especially farmers managing rich biodiversity and natural resources**

These are custodian farmers and indigenous communities who reside around biodiversity-rich ecosystems such as buffer zones, watersheds, wetlands and river basins, and hold the knowledge and aptitude for biodiversity-based production systems. They are the key agents in local development that build on existing social, natural and human capital in the communities. Working with these farmers and communities, we will demonstrate the synergies between community empowerment and sustainable conservation and management of local biodiversity and natural resources.

- **Sub-Group 2: Farmers living in the rural-urban interface and road corridor areas**

This sub-group consists of farmers in the rural-urban interface and along road corridors who are essential for promoting production-consumption interlinks through appropriate value chain interventions (production, value addition and marketing), especially for local agriculture and forest products (high-value indigenous/local crops, fruits, vegetables, wild edible plants and non-timber forest products).

- **Sub-Group 3: Food and nutrition-insecure communities, especially climate-vulnerable, landless/land-poor, marginalised, socially excluded and people with disabilities**

Due to the remoteness, poor accessibility and fragility of their areas, these farmers have largely remained marginalised in development efforts. Our special focus will be on landless/land-poor, indigenous people, Dalits, socially excluded, people with disabilities, and other ethnic minorities who are vulnerable to food and nutrition insecurity and climate change. Our focus will be to strengthen the local basis for their food and nutrition security with minimal reliance on external inputs.



HIGHLIGHTS
of FY **2024/25** ▶▶

OVERALL PROGRAMME PORTFOLIO

This year remained significant for LI-BIRD as the organization restructured its management structure to operationalize its strategy 2030. The restructuring strengthened internal leadership by promoting experienced staff and assigning them expanded roles and responsibilities aligned with organizational needs. A key change was the consolidation of the Programme Operations and Programme Development Director positions into a single Head of Programmes (HoP) role who is responsible for leading programme development and coordinating operations in close collaboration with the Executive Director and Strategic Programme Leads. To effectively implement its three strategic programmes, Food and Nutrition Security, Biodiversity and Ecosystem Health, and Climate Action, LI-BIRD appointed dedicated Strategic Programme Leads (SPLs) to coordinate the programme portfolios and support designing the projects and programmes. For large-scale projects, the organization has also provisioned Chief of Party (CoP) or Deputy Chief of Party (DCoP) position to lead and execute the projects under the direct supervision of the Executive Director.

LI-BIRD continued to reinforce its institutional governance and operation systems through the revision and development of key organizational policies and procedures, aligning with evolving regulatory requirements, donor compliance standards, and internationally recognized best practices. This year, LI-BIRD developed a comprehensive fundraising strategy to guide programme development, strengthen resource mobilization efforts, and diversify its funding base for long-term institutional sustainability. In addition, the organization reviewed and strengthened its policies, including the Anti-Money Laundering and Combating the Financing of Terrorism (AML-CFT) Policy; the Environmental and Social Safeguarding Policy; the Sub-

granting Partnership Policy; and the Complaint Handling Policy and Procedures, thereby reinforcing transparency, accountability, and risk management mechanisms across its operations. LI-BIRD's Audit Committee worked closely with the Internal Audit function to further strengthen governance and compliance, ensuring financial integrity, internal accountability, and effective organizational oversight

This year has been remarkable in expanding LI-BIRD's partnerships with donor organizations and development partners and programme portfolios with the launch of eight new projects. LI-BIRD established a direct partnership with the European Union (EU) through a consortium project 'Better Nutrition' led by LI-BIRD, supporting the Multi-Sector Nutrition Programme (MSNP) and establishing a relationship with the National Planning Commission (NPC) and other development partners working on the nutrition sector. Similarly, the organization also initiated a collaboration with the Foreign, Commonwealth and Development Office (FCDO) through the RAIN consortium project, led by People in Need (PIN) and DanChurchAid (DCA), enhancing LI-BIRD's experience in nature-based solutions and anticipatory actions while expanding its presence in Madesh and Lumbini Provinces. Other additional initiatives included phase III of Scaling Up Climate Resilient Agriculture for Sustainable Livelihood of Smallholder Farmers in Nepal (CRA III) funded by BMZ via Bread for the World (BftW); Cultivating Change in a Warming World funded by SIDA via Oxfam in Nepal; Promoting GESI responsive agroecological practices as Nature-based Solutions (Nbs) in Humla in Nepal (HI-REAP), funded by FCDO via ICIMOD; Empowering Women through Skills and Entrepreneurship Development in Godawari Municipality funded by iDE Nepal; Promoting Resilience and Enterprises Development through utilization of Natural



Launching of Global Hunger Index 2024 in Nepal. Photo: LI-BIRD Photo Bank

Resource in Nepal (PRERNA) funded by BAYER Crop Science via iDE Nepal; and phase 2 of Renewable Energy Access for Livelihoods in Fragile Buffer Zones (REALIZE2) funded by Jersey Overseas via Renewable World, collectively advancing climate resilience, livelihood improvements, and sustainable natural resource management in Nepal.

This year, LI-BIRD convened a national event, launching of Global Hunger Index (GHI) Report 2024 in Kathmandu in collaboration with Welthungerhilfe (WHH) Nepal. The event brought together senior government officials, researchers, experts, and development partners to reflect on Nepal's hunger situation and policy priorities. In partnership with the Ministry of Agriculture and Livestock Development (MoALD) and with financial support from World Future Council (WFC) and IFOAM Organics International, LI-BIRD facilitated the development of the Agroecology Roadmap of Nepal through extensive national and sub-national consultations. As a part of policy contribution, LI-BIRD facilitated the registration of five local landraces of crops (Jorayal Basmati rice from Doti, Lal Anadi from Kanchanpur, Hariyo Kauchin rice from Sindhupalchowk, Kalo Patle rice from Kaski, and Madale Kakro from Kasi) to the national seed system under the Schedule D of Seed Regulation 2013. Additionally, LI-BIRD also participated

in major international platforms, including the United Nations climate change Conference of the Parties (COP 29) in Baku, Azerbaijan; Organic World Congress in Taiwan; and Global Forum for Food and Agriculture (GFFA) in Berlin, Germany, enhancing institutional recognition and visibility, global collaboration, and partnership with donor and funding organizations for future initiatives.

This year, LI-BIRD implemented 21 projects across 67 municipalities and rural municipalities of 25 districts from six provinces (except Koshi Province). Of 21 projects, we successfully completed four projects and launched eight new projects. Through these projects, we reached 65,235 beneficiary households, with 23,717 HHs as direct beneficiaries, through 840 community institutions, including farmers' groups, cooperatives, community forest user groups, and community seed banks. LI-BIRD mobilized NPR 295.9 million and leveraged NPR 26.1 million as co-financing from government and community institutions to support our impact groups. Of the direct beneficiaries, 79% were women, 64% were from Janajati communities, 11% were from Dalit communities, and 441 HHs had people with disabilities.

MAJOR ACHIEVEMENTS

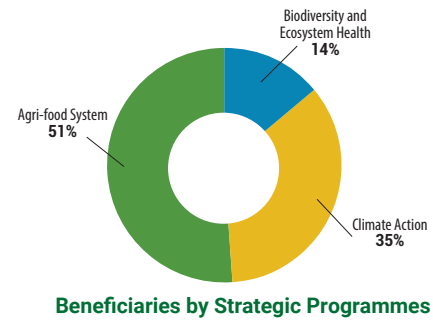
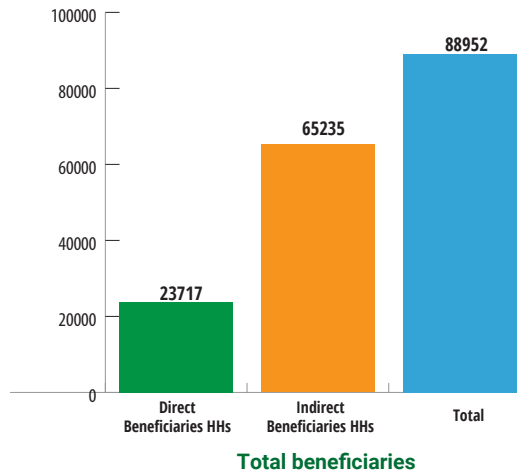
▶ STRATEGIC PROGRAMMES

Resilient Agri-food System for Food and Nutrition Security

This programme aims to build a resilient agri-food system for food and nutrition security by improving farm productivity, diversity, and access to locally grown, culturally important, safe, and nutritious foods. In FY 2024-25, this programme reached 12,099 direct beneficiaries through nine different projects with an additional 48,094 indirect beneficiaries. A total of 9,548 participants (60% women) were reached via various trainings.

This year, two new projects were launched: the third phase of the Scaling Up Climate-Resilient Agriculture for Sustainable Livelihoods

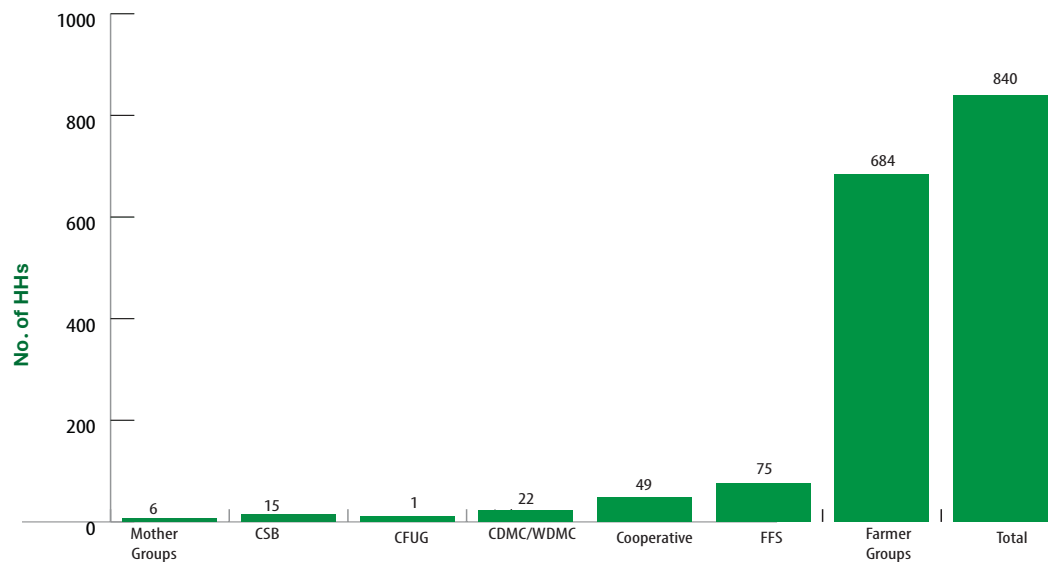
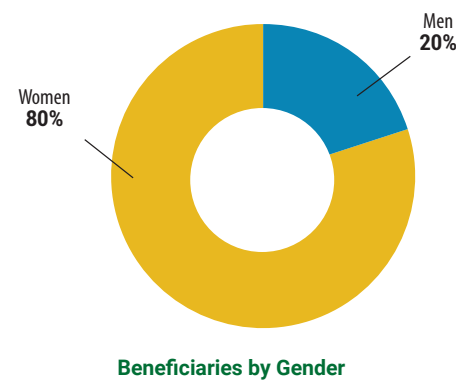
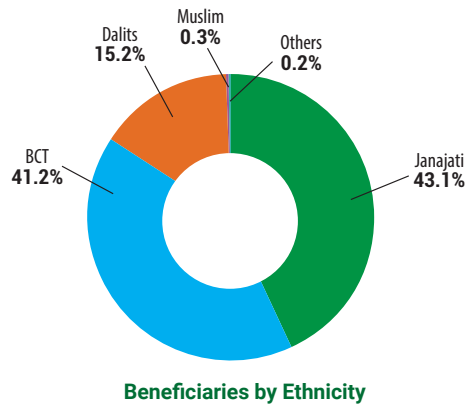
of Smallholder Farmers in Nepal (CRA III) and the European Union-funded Better Nutrition Project. The nutrition project, titled **“Empowered Communities and CSOs for Inclusive Nutrition Governance in Hilly and Mountain Regions of Western Nepal,”** is funded by the European Union and jointly implemented with WAC Nepal in Achham and WHH Nepal as a technical partner, aims to strengthen sustainable and inclusive nutrition governance, contributing to the government’s flagship MSNP III (2023–2030) Programme. It focuses on improving knowledge, awareness, and access to quality public nutrition services, particularly for socially and economically disadvantaged groups, including people with



Person with Disability (PWD) Reach
441



Completed : 4
New : 8
Ongoing : 13



Participants participating in nutrition health training in Bajura, organized by EMPOWER Project.



Farmers gathering fresh local vegetables and loading them for market in Maramche Kaski, supported by the CRA-III Project

disabilities. The project works closely with local governments, service providers, citizens, and CBOs, with community and women's empowerment as key pathways to improved nutrition. Under this strategic programme, LI-BIRD is translating agroecology into practice by generating evidence, building capacities, and promoting context-specific solutions and practices. Key projects under the Agroecology theme include the Green Evolution Project, the Himalayan Agroecology Initiative (HAI), Green Karnali (GK), and Climate-Resilient Agriculture (CRA-III). Together, these projects demonstrate the potential of agroecology to strengthen Nepal's food systems and improve the resilience and livelihoods of farming communities. The **"Scaling Up Climate-Resilient Agriculture for Sustainable Livelihoods of Smallholder Farmers in Nepal (CRA-III)"** project is currently in its third phase of implementation. It promotes the *conservation and sustainable use of agricultural biodiversity* and the *scaling up agroecological farming practices*, with a

strong focus on low external-input approaches. The project contributes to building sustainable livelihoods and climate resilience, especially for women smallholder farmers.

CRA-III targets 1,509 households (250 in Sindupalchok, 1,150 in Kaski, and 109 in Syangja), ensuring that at least 70% of direct beneficiaries are women with decision-making roles in agriculture within their households. Building on the agroecology model village approach, CRA III will establish four additional agroecological model villages using a home-grown approach comprising six core components: i) Agrobiodiversity; ii) Soil health and water management; iii) Ecological pest and disease management; iv) Value addition and marketing; v) Traditional knowledge, social values, and food culture and vi) Women's empowerment and strong community institutions. In addition, CRA III emphasises field-level action research and the integration of agroecology into government policies and academic curricula, supporting long-term transformation of Nepal's food systems.

Key achievements of CRA Phase II include the establishment of three agroecological model villages at different stages of development, with a strong emphasis on on-farm conservation and the sustainable use of agrobiodiversity. The project successfully registered important landraces of cucumber (*Madale Kakro*) and rice (*Kalo Patle Dhan*, and *Hariyo Kauchin Dhan*) from Maramche and Sindhupalchok in the Seed Quality Control Centre (SQCC). The Shree Pragatisheel Community Seed Bank (CSB) received recognition from Annapurna Rural Municipality for its contribution in conserving and registering *Madale Kakro* and *Kalo Patle Dhan*.

The five-year **"Green Karnali: Climate and Gender Responsive Resilient Agriculture and Enterprises in Karnali River Basin"**

project, funded by DANIDA through DCA, has been implemented since 2022 in Surkhet and Dailekh (with SOSEC Nepal). It has reached 724 households from 32 farmer groups by promoting climate-resilient agroecological approaches. With a focus on strengthening resilient livelihoods of smallholder farmers, particularly women and youth, the project prioritised market linkages and successfully established a weekly Haat Bazaar in Barahtaal, with 75% of construction costs from the rural municipality. Operating every Friday, the market directly benefits over 100 farmers. The project also promotes local crops and biodiversity through street festivals in collaboration with Karnali MoLMAC and supported the first provincial honey exhibition in January 2025. Through joint policy advocacy, MoLMAC Karnali endorsed



A farmer happily harvesting fresh vegetables from her homegarden in Birendranagar, Surkhet, support from Green Karnlai Project.



Farmers taking part in the Food System Assessment in Jumla under the Green Evolution Project.

agroecological model villages development and community seed banks in its annual policy and programme.

“The Green Evolution: Pathways for Food System Transformation” project, funded by BMZ, Germany, and technically supported by WHH, is a multi-country project implemented by LI-BIRD, HPC, and ANSAB in Surkhet, Dailekh, and Jumla districts of Karnali Province, Nepal. The project aims to strengthen the local food systems that safeguard people’s right to safe and healthy food, promote food sovereignty, and build climate resilience. The project reached 1,642 households, mostly women and marginal communities, through Farmer Field Schools on Sustainable Integrated Farming System (SIFS), and targeted input support. It is developing and piloting participatory tools for local food system assessment (FSA) in Jumla to identify gaps and guide farm and landscape design, generating evidence to scale agroecological

practices through extension systems and academia. In parallel, a training curriculum for extension authorities is being developed in partnership with the Agriculture and Livestock Business Promotion and Training Centre. Collaboration opportunities for academic course development are being explored with Mid-West University and Kathmandu University. To support landscape restoration and agroforestry, 8,221 saplings were distributed to 1,448 households in coordination with forest authorities and community forest user groups.

The Livelihood and Resilience Enhancement Project (LREP-II), funded by NORAD through the Development Fund Norway, is being implemented in Bardiya, Kailali, and Humla districts to improve the livelihoods and climate resilience of freed bonded labour, landless, and marginal households through awareness raising, capacity building, income-generating activities, and strengthened cooperative

governance. In FY 2024-25, the project reached 7006 beneficiary households (85% Women, 9 PwDs). Through the Nutrition Field School (NFS) approach, 519 HHs, particularly women of reproductive age, were trained and supported in nutrition, health care practices, and home garden management across nine municipalities of three districts. The NFS programme is jointly implemented by nine municipalities, with health departments facilitating health-specific sessions, and agriculture & livestock departments supporting home garden improvement. Several wards and municipalities have committed to continuing the programme in FY 2082/83.

Economic empowerment through value chain development activities engaged over 819 households, generating a total income of NPR 2,24,104 through vegetable pickle, bamboo crafting, turmeric processing and packing,

mushroom farming, seed production, livestock rearing (including poultry and rabbits), and other off-farm activities. This year, four CAV Schools were conducted in Kailali and Bardiya, engaging 108 participants and demonstrating different climate-adaptive practices. The Agricultural Knowledge Centre (AKC) Kailali leveraged NPR 10,77,400, with a community contribution of NPR 2,85,405, to establish two model villages in Gauriganga Municipality and Joshipur Rural Municipality.

“Scaling up agroecology in the Himalayas: towards a common roadmap”, funded by the World Future Council (WFC) and the International Federation on Organic Agriculture Movement (IFOAM-OA), is a joint Himalayan Agroecology Initiative to improve livelihoods and sustainability across the Himalayan region of India, Nepal, and Bhutan. LI-BIRD is facilitating the development of Nepal’s



Kailali women farmers turning local produce into pickles with support from the LREP-II Project.



Farmers sifting vermicompost in Kaski, supported by the PRERNA Project.

Agroecology Roadmap through a multi-sectoral engagement, involving government officials, policymakers, practitioners, experts, researchers, development workers, civil society actors and their networks, academia, and farmers' organizations. Following extensive consultations and exercises, a draft roadmap has been prepared and is currently under wider review. **"Promoting Resilience and Enterprise Development through Local Resource Utilization in Nepal (PRERNA)"**, is an innovative project jointly implemented by LI-BIRD and iDE Nepal in Madi and Machhapuchhre Rural Municipalities of Kaski District, Gandaki Province. Funded by Bayer Cares Foundations- Social Innovation Fund, the project enhances farmers' well-being by increasing agricultural production and income through improved access to and adoption of Trichovermicompost (TVC), while promoting nutrition-sensitive and gender-transformative agriculture. Key achievements

include strengthening the supply chains of six TVC enterprises by stimulating sustainable demand and ensuring quality standards. The project has accelerated the effective use of biofertiliser and other regenerative, nutrition-sensitive, and gender-friendly agriculture practices, contributing to increased production of safe vegetables.

Biodiversity and Ecosystem Health and Services for Resilient Landscapes and Communities

This strategic programme aims to enhance biodiversity and ecosystem health and services, fostering resilient landscapes and communities through improved ecosystem service provisioning, restoration, and sustainable management of degraded and critical landscapes. Under the strategic programme, four projects were implemented in the year, with one project concluded, and one new project initiated.

LI-BIRD successfully concluded the **Embedding**

Sustainable Pollination Management into Nepalese Agriculture System (Nepal Pollination Project) project in 2024. The project was implemented in Karnali Province, funded by the Darwin Initiative, led by the University of Bristol, UK, and jointly implemented by LI-BIRD and HERD International, with technical support from Agriculture and Forestry University and Tribhuvan University. The project successfully developed and facilitated the endorsement of the *Provincial Pollination Management Strategy* of Karnali Province in close coordination with MoLMAC, Karnali Province. It significantly contributed to the capacity development and sensitization of local farmers and over 250 government extension workers, agriculture teachers, and development partner staff on pollinator conservation and management. It also collaborated with the Agriculture and Livestock Business Promotion Training Centre (ALBPT), Surkhet, to integrate the pollination

management curriculum into the regular basic in-service training syllabus targeting government agriculture extension workers. Overall, the project successfully created a movement for pollinator conservation and promotion by linking research, practice, and policy.

Renewable Energy for Resilient Agri-food Systems (RERAS) is a four-year project (2024–2027) led by UNDP and funded by the Royal Norwegian Embassy, being implemented in the Bajura, Mugu, Jumla, and Sindhuli districts, covering 11 municipalities in collaboration with local governments and in partnership with the Alternative Energy Promotion Centre (AEPIC), the International Centre for Integrated Mountain Development (ICIMOD), and the World Food Programme (WFP). The project aims to increase the productive use of energy in the agricultural system, focusing on improving production and



Women farmers applying bordo paste to fruit trees as part of orchard management in Jumla, supported by RERAS Project.



Community group engaging in a tree planting program in Kaski, organized by the Paristhiti Yantr Project.

productivity, minimising post-harvest losses, and increasing market access for indigenous crops and fresh vegetables. In 2024/25, the project reached 2,869 households, comprising 79% Brahmin, Chhetri, and Thakuri (BCT), 5% Janajati, and 16% Dalit communities. The project extensively promoted nutrition-sensitive integrated home gardens among all beneficiaries; established 62 community-level climate-smart agriculture (CSA) demonstration and learning sites; promoted CSA technologies among 468 households through a package approach; strengthened six model apple orchards; established four local market clusters; promoted four renewable energy-based agro-processing tools; and strengthened two community seed banks (CSBs) for the conservation and promotion of indigenous crops linked to the school mid-day meal programme in Jumla and Bajura.

Integrated Resources Management of Water and Ecosystem in Central Hills of Nepal (Paristhiti Yantr) is a three-year project (2024-2026) implemented by International Rainwater Harvesting Alliance (IRHA) and Kanchan Nepal, in collaboration with LI-BIRD and Sapana Village Social Impact (SVSI). The project is being implemented in Pokhara Metropolitan City, Madi Rural Municipality, and Rupa Rural Municipality of Kaski district. The project aims to increase community resilience and living conditions by restoring ecosystem functionalities, enhancing water availability, consolidating agricultural practices, and strengthening sustainable management of natural resources. In 2024/25, the project reached 2,474 direct beneficiaries, comprising 60% women and 40% men. The project promoted an agroecological production system in five communities, introduced agroecological production technologies among 102 households; provided capacity building training to 252 individuals on agroecological

farming practices; strengthened financial literacy among 86 individuals, promoted 3 multi-purpose nurseries; and strengthened one CSB for the conservation, promotion, and use of indigenous crops.

Renewable Energy Access for Livelihoods in Fragile Buffer Zones – Phase II (REALIZE II) is an integrated initiative operating at the nexus of conservation, livelihoods, and renewable energy. Funded by Jersey Overseas Aid (JOA), and technically led by Renewable World Nepal, it is jointly implemented by LI-BIRD and Beautiful Nepal Association (G). in the northern buffer zone of Bardiya National Park, specifically in Barahatal Rural Municipality and Bheriganga Municipality of Surkhet district. It targets over 35,000 people living in the northern buffer zone of Bardiya National Park, including local school students, community forest user group

(CFUG) members, cooperatives, and forest-dependent marginalised households. Building lessons from Phase I of the project, REALIZE II adopts a community-led Park, Palika, and People Partnership (4P) approach, featuring an expanded geographic focus, synergistic initiatives, and system development. The project also engages national-level stakeholders to replicate good practices and influence broader conservation and energy policies across Nepal's protected areas.

Climate Action for Community Resilience

This strategic programme strengthens the adaptive and risk management capacities of climate vulnerable communities by promoting climate risk-informed activity planning, generating adaptation tools, and advancing



Farmers participating in Bee Management Training in Surkhet, organized by the REALIZE-II Project.



A farmer harvesting watermelons through riverbed farming in Kailali, supported by the SAKSHAM Project.

locally led adaptation. It also generates grassroots-level evidence through action research to inform and influence climate policies at local, national, and global levels.

In the year 2024/25, LI-BIRD initiated the implementation of the **Resilience, Adaptation and Inclusion in Nepal (RAIN)** project, funded by the Foreign, Commonwealth and Development Office (FCDO), led by People in Need (PIN), co-led by DanChurchAid (DCA), and implemented by a consortium of partners, including Community Self-Reliance Centre (CSRC), PRERANA, and Youth Innovation Lab (YI-Lab). The project is being implemented in eight Municipalities of Lumbini Province and nine Municipalities of Madesh Province. The project promotes the Locally Led Adaptation (LLA) and Nature-Based Solutions (NbS) approach to strengthen community resilience.

Strengthening Capacity of Smallholder Farmers for Resilient Livelihoods (SAKSHAM), a four-year (2022-2025) project funded by the Ministry of Foreign Affairs of Finland through FELM Nepal, is being implemented in Laljhadi Rural Municipality, Krishnapur Municipality, and Joroyal Rural Municipality of Kanchanpur and Doti districts of Sudurpashchim Province. The project improves the livelihood and resilience of marginal and climate-vulnerable families through the promotion of climate-resilient technologies and practices, capacity building, and investing in diversified income options. In FY 2023/24, the project reached 3,673 farmers (79% women), established 43 resilient irrigation schemes, three CSBs, and three climate-smart villages, and introduced 25 resistant crop varieties and 20 climate-resilient and women-friendly tools. The project also promoted leasehold farming, riverbed farming, and home gardens to improve food and nutrition security, while diversifying incomes. Additionally, the project supported the

development of the Local Disaster and Climate Resilience Plan (LDCRP), Local Disaster and Climate Resilience Framework (LDCRF), DRR Policies and Relief Standard Guidelines, and hazard-specific simulation guidelines, alongside capacity-building training on climate change adaptation and mitigation to local governments, stakeholders, and communities.

Easing and De-risking Transition to Climate Resilient Food Production for Enhanced Self-Reliance in Humanitarian Contexts [SAFE project] is a two-year project, funded by NOVO Nordisk Foundation through DCA Nepal, and is being implemented in Barbardiya Municipality of Bardiya district. Lumbini The project promotes the evidence-based models for easing and de-risking the transition to sustainable, climate-resilient agroecology-based food production, while safeguarding the local food and market system to enhance food security and resilience. The project works with

135 direct beneficiaries (87% women and 96% Janajati). The key interventions include a food system assessment to identify community risks and prioritise resilience-building measures; establishing five Agroecological Model Villages (AEMV); conducting agroecological farmer field schools, community seed libraries, and participatory action research to preserve and exchange local seeds among the community members. An Agro-met Advisory Service with a customised weekly Agro-met Advisory Bulletin developed in collaboration with Local Government is now operational.

Cultivating Change in a Warming World, a four-year project funded by Swedish International Development Agency through Oxfam Novib, is being implemented in Dullu Municipality of Dailekh District and Laljhadi Rural Municipality and Krishnapur Municipality of Kanchanpur District. The project strengthens community



Field data recording and crop observation during a potato varietal trial in Bardiya, supported by SAFE Project.



Demonstration of Vermiwash technology in Humla, supported by HI-REAP Project.

resilience, especially among women and youth, through improving the seed sector and promoting agroecological farming. It supports communities and local government bodies through Farmers Field Schools on participatory plant breeding, home garden promotion, climate-resilient agroecological practices and capacity building trainings and exposure visits. To conserve local and indigenous crops, diversify farmers' incomes, and strengthen community resilience, the project establishes three Agroecological Model Villages and works with three Farmer Seen Enterprises (FSEs) to enhance the local seed system and establish CSBs. The Gender Action Learning System (GALS) is embedded in the project, with 11 trained GALS facilitators advancing agroecology as a pathway for social and economic transformation.

Himalayan Resilience Enabling Action Programme (HI-REAP), funded by FCDO through ICIMOD, which is being implemented in Chankheli Rural Municipality of Humla District and Bheriganga Municipality of Surkhet District. The

project aims to strengthen community resilience by promoting GESI-responsive agroecological practices such as Nature-based Solutions (NbS), generating co-benefits for biodiversity and ecosystems, and improving agricultural productivity, ensuring food and nutrition security. In collaboration with Karnali Province, the project establishes an Agroecological Demonstration Farm in Horticulture Development Farm, Darma, and two Community Learning Centres, one each in Chankheli Rural Municipality and Bheriganga Municipality.

Multi-hazard Early Warning for Anticipatory Action Addressing Lives and Livelihoods (PRARAMBHA), a two-year (2024-2025) project with financial support from Welthungerhilfe (WHH) and technical partnership from People in Need (PIN), is being implemented in Gurbhakot Municipality of Surkhet District. The project strengthens the capacity of communities and the local government to operationalise a functional early warning system and agrometeorological advisory services for anticipatory action and resilience building. In collaboration with the

municipality, the project has disseminated the Agrometeorological Advisory service through Bulletin, SMS, and social media, reaching thousands of farmers to plan agricultural activities based on weather forecasts. Key activities include climate field schools, action research on soil erosion control through intercropping and landslide monitoring via rain gauge, capacity building on early warning and disaster preparedness and response, and the development of community-level Forecast-based Anticipatory Action (FbA) plans and municipal-level Disaster Preparedness and Response Plan (DPRP) to reduce the climate risks.

Partnership, collaboration, and engagement

During the year 2024–2025, LI-BIRD further strengthened and expanded its partnerships, collaborations, and engagements with a wide range of stakeholders, including community

institutions, local and provincial governments, development partners, and donors, to enhance the effectiveness, scalability, and long-term sustainability of its interventions. This year marked a significant milestone with the initiation of partnerships with new donor organizations, enhancing confidence in LI-BIRD's expertise and impact, and opening new opportunities to strengthen its programme portfolio.

At the local level, LI-BIRD worked closely with 67 municipalities across 25 districts in six provinces, in partnership with 840 community-based institutions, including farmer groups, cooperatives, community seed banks, community disaster management committees, community forestry user groups, and others. Through these collaborations, LI-BIRD effectively engaged with local governments to leverage resources, support the formulation of policies such as the Local Disaster and Climate Resilience Plan (LDCRP), the Disaster Preparedness and Response Plan (DPRP), and establish functional



Participant practicing fire extinguishing during the Disaster Volunteer Mobilization Training in Surkhet, organized by the PRARAMBHA Project.

mechanisms, including agromet-advisory services. These partnerships fostered strong community ownership, ensured alignment with local development plans and programmes, and enhanced the relevance, inclusiveness, and sustainability of programme interventions.

At the provincial and national levels, LI-BIRD has maintained formal partnerships with key ministries, research and academic institutions through Memoranda of Understanding (MoUs), implementing the priority interventions outlined in these agreements. During the year, the Ministry of Land Management, Agriculture and Cooperative (MoLMAC), Sudurpashchim Province, leveraged NPR 8.5 million for joint interventions with LI-BIRD. Furthermore, LI-BIRD also expanded its programme in Madhesh and Lumbini Provinces and strengthened collaboration with the respective MoLMACs and the Ministry of Forests and Environment. At the national level, LI-BIRD deepened its partnership with the Ministry of Agriculture and Livestock Development (MoALD) by facilitating the development of Nepal's Agroecology Roadmap, a flagship initiative to promote agroecology. Additionally, LI-BIRD also collaborated with the Nepal Agriculture Research Council (NARC) to implement the MoU through a national-level workshop. Similarly, LI-BIRD provided internship opportunities to seven students from Agriculture and Forest University (AFU) and Far Western University (FWU) to carry out their bachelor's thesis studies.

At the regional and international level, LI-BIRD strengthened its collaboration with development partners, UN agencies, the Adaptation Fund, and other networks through participation in regional and international forums and workshops. This year, LI-BIRD successfully initiated new partnerships with the European Union (EU) through a CSO call, as well as with FCDO and People in Need (PIN) through climate-resilient

initiatives. These partnerships enhanced knowledge exchange and cross-country learning, and supported the dissemination and scaling of good practices, particularly in agroecology, climate-resilient agriculture, and sustainable food systems.

Overall, LI-BIRD's partnership, collaboration, and engagement efforts during 2024–2025 were instrumental in mobilising resources, including financial support, technical expertise, and policy influence. These partnerships enabled the organization to deliver impactful, scalable, and policy-relevant contributions while reinforcing LI-BIRD's position as a trusted development and knowledge partner in Nepal and beyond.

Research, Knowledge Management, and Capacity Building

Knowledge generation through participatory learning and research, and the integration of good evidence-based practices, effective technologies, and approaches into development programming and policy advocacy, is a key pathway for the organization in promoting a sustainable and resilient environment. To support this approach, the organization provided internship and research opportunities to the students from FWU, MWU, and AFU to conduct their research, aligning with LI-BIRD's strategic programmes. During the year, a total of 11 students were supported through the SAKSHAM, LREP II, Green Karnali, and CRA III projects.

In addition, the SAFE and Green Karnali project team carried out field trials on the performance of different potato varieties through participatory varietal selection, engaging farmers in the process. This year, LI-BIRD staff published three journal articles on "Performance Evaluation and Trait Association Analysis of Proso Millet Genotypes in Bajura District"; "Tradition of Cultivating Bean Mixture for Multiple Benefits and Sustainable Production System in Mountain

Agriculture" and "Adoption of Climate Resilient Agro-Ecological Practices in the Karnali River Basins". Overall, 28 knowledge products, including the journal articles, stories of change, working guidelines, training manuals, and flyers, were produced.

Furthermore, 15 papers developed by staff based on learnings and studies from different projects were presented through an in-house symposium mechanism. These papers are currently under review process with the aim of publishing them annually to facilitate cross-fertilization of knowledge and ensure long-term documentation of experiences and innovations.

To systematically track the project performance and assess progress against the targeted outcomes, an endline survey of the SAKSHAM and LREP projects, baseline surveys of CRA III and Better Nutrition projects, and an outcome monitoring survey of the RERAS project were conducted this year.

Besides training and capacity-building support to the farming communities, a wide range of capacity-building activities were organised to strengthen the knowledge, skills, and collaboration of staff and stakeholders. These included exposure visits and Learning and Sharing programme organised with cooperative management committees and lead farmers; multiple trainings like the ToT on Participatory Learning and Action (LANN+), and Start and Improve Your Business trainings conducted by WHH Nepal. Additionally, the Master Trainer's Training on Sustainable Integrated Farming Systems and training on Organic Agriculture in Karnali Province, supported by TICA and the Royal Thai Embassy, further enriched technical expertise.



28 Publications
Peer reviewed articles, books, proceedings, book chapters and flyers

Communications & Network

 10,553 followers	 1,286 followers
 3,021 followers	 3,390 subscribers
 625 followers	 19,485 website visitors (FY 2024-25)

The organization also participated in a number of workshops, including workshops including those on Indigenous Peoples' Biocentric Restoration and Food Systems Profiling led by FAO and NTNC, Climate Resilient Agriculture facilitated by WHH, Regional Accountability for Locally Led Adaptation organised by IIED, and Advocacy and Communication jointly hosted by ANSAB and WHH Nepal. Together, these events engaged government officials, I/NGO representatives, international guests, scholars, farmers, and project teams, fostering cross-learning, knowledge sharing, and collaboration to advance sustainable agriculture, nutrition security, and community resilience.

With support from the Partner Investment Fund Initiatives from Oxfam, two ToT trainings were conducted to enhance staff capacity. One ToT on Social Mobilization targeted frontline staff, while the second focused on Training Design and Delivery for officers. Altogether, 48 staff members benefited from these trainings, strengthening their skills in community engagement, facilitation, and effective knowledge transfer.

Key IMPACTS STORIES

RESURGENCE OF FOXTAIL MILLET (KAGUNO) IN KASKI



Ms. Ambika Bhandari presenting the current status of Kaguno cultivation and achievements of the farmer's group.

Ambika Bhandari (55), a resident of Pokhara Metropolitan City, Ward No.28, is a lead farmer and Chairperson of Kaphalghari Mothers' Group. Through her leadership, foxtail millet was reintroduced in her community, improving her own and other community members' livelihoods, while establishing it as an emerging cash crop.

Foxtail millet (Kaguno) is a highly nutritious and climate-resilient cereal important for food security. However, labour-intensive cultivation and increasing labour shortages

due to outmigration of rural youth led to a gradual decline in production of foxtail millet, promoting farmers to shift to maize cultivation. Unfortunately, this transition exposed crops to frequent and destructive wildlife attacks, particularly by monkeys, causing significant crop losses, discouraging farmers, and creating a problem for local livelihoods.

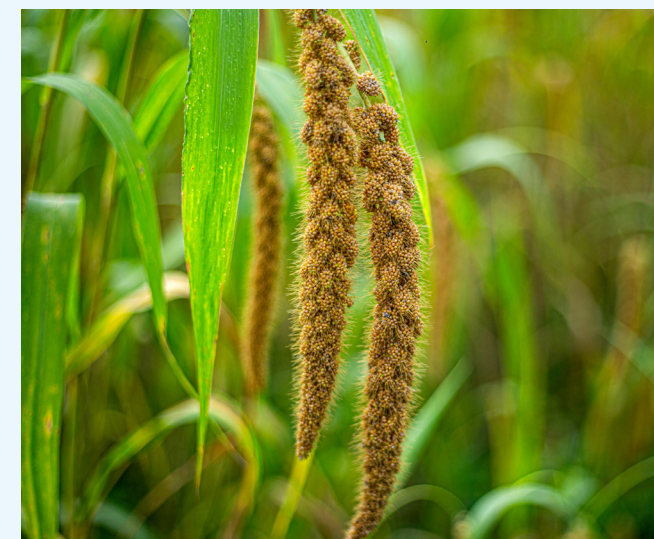
She openly shares her experience with visitors, saying, "If we had planted maize, you wouldn't have met us at home. We would have been guarding our

fields from monkeys. Six years ago, my mother suggested growing foxtail millet because it is not attacked by monkeys. The following year, I brought about one kilogram of seed from her and started cultivation, harvesting about 44 kilograms in the first season. While seeking support for cultivating foxtail millet, we were connected with LI-BIRD, and since then, LI-BIRD has been continuously supporting my community and me in strengthening farmers' capacity, providing quality seeds, and collaborating with various stakeholders to ensure market opportunities for foxtail millet. Now, foxtail millet has emerged from being a neglected crop to a major cash crop in Kaphalghari, with expanding cultivation and increasing productivity. Planted in March/April and harvested in June/July, it reaches the markets in August/September, allowing farmers to receive payments before the Dashain festival. Members of the Kaphalghari Mothers' Group say that this has eased farmers to manage festival expenses." Mrs. Bhandari adds that the income from the sales of foxtail millet allows women to manage their own expenses and feel financially independent without relying on their husbands for money.

While promoting local landraces in its working sites, LI-BIRD conducted a four-cell analysis that identified foxtail millet as a crop on the verge of extinction. Recognizing its drought-tolerance, less susceptibility to diseases, early-maturity, and high nutritional value, this crop was prioritised for its conservation and use. In 2014/15, LI-BIRD tested ten different varieties of foxtail millet and found the white foxtail millet of Kaski to be the highest-yielding variety. This result supported the expansion of cultivation areas and strengthened local seed selection, production, and distribution systems. Through the continued seed distribution and farmer-to-farmer programmes conducted by various LI-BIRD projects across Kaski, foxtail millet cultivation has gradually expanded.

Additionally, LI-BIRD supported the communities with targeted promotional activities such as providing tilling and threshing machines. Last year alone, LI-BIRD distributed 400 kilograms of seed through the CRA project to farmers in Hansapur, Kaure, Madhyabesi, Okhle, and Kaphalghari, resulting in six tons of production valued at NPR 6,00,000. This year, 400 kgs of seed have already been purchased from the Kaphalghari Mothers' Group. Annapurna Agro Pvt. Ltd. has been purchasing and commercialising the locally produced foxtail millet for the past four years from Kaure, Madhyabeshi, and Pakhalghari.

LI-BIRD also conducted consumer awareness-raising activities and documented various foxtail millet recipes, supporting the establishment of market mechanisms and commercialization. To strengthen foxtail millet production, the CRA project organized a multi-stakeholder travelling seminar to Kaphalghari in April 2025 to showcase and enhance awareness among local and provincial government representatives. Following the visit, Pokhara Metropolitan City introduced a minimum support price of foxtail millet to encourage farmers. Furthermore, the Government of Nepal's decision to celebrate National Millet Day (Kodo Diwas) annually on Shrawan 16 (around August 1st) will further support the conservation and promotion of various millet species.



Foxtail millet panicles growing in the field.

CONSERVATION THROUGH UTILIZATION: A STORY OF THE DHAULIGAAD AGRICULTURE COOPERATIVE, JUMLA



Hanku Community Seed Bank managed by Dhauligaad Agriculture Cooperative, Jumla.

Smallholder farmers in Nepal, particularly those cultivating indigenous crops, have long faced challenges in accessing stable and fair agricultural markets. Low production, weak market linkages, and uncertain pricing often discourage farmers from continuing traditional farming practices, putting Nepal's rich agrobiodiversity at risk. The experience of the women-led Dhauligaad Agriculture Cooperative from Tatopani Rural Municipality, Jumla, demonstrates how linking conservation by utilization can help reverse this trend.

Established in 2020 (and operating as a farmers' group since 2016), the Dhauligaad Agriculture Cooperative initially focused on conserving indigenous crops and their varieties through the Hanku Community Seed Bank, with support from

LI-BIRD. However, after project support phased out in 2021, the cooperative struggled to sustain its activities and gradually lost momentum.

A turning point came in 2023, when LI-BIRD re-engaged with the cooperative through the Renewable Energy for Resilient Agri-food Systems (RERAS) project, funded by the Norwegian Government and UNDP Nepal. The project promoted a "conservation through utilization" approach, linking agrobiodiversity conservation, livelihoods, and markets. Through support on institutional strengthening, seed multiplication, and the multifunctional use of the community seed bank under a cooperative model, the cooperative regained momentum. Under the leadership of Ms. Kabita Jaisi and with stronger collaboration with the Community Seed Bank Association Nepal and the

local government, the cooperative strengthened its confidence, capacity, and direction to bring the cooperative back into full operation.

A major breakthrough happened in 2024, when the cooperative was linked to Tatopani Rural Municipality's Home-Grown School Meal Programme, in coordination with the World Food Programme through the RERAS project. The cooperative began producing, processing, and supplying indigenous crops and vegetables to local schools. By 2024–25, it had supplied over seven tons of local crops such as Jumli Marsi rice, millets, beans, barley, and buckwheat to 10 schools, benefiting 657 schoolchildren (87% girls) and generating NPR 1.3 million in annual transactions. This initiative created a reliable local market for farmers while improving children's access to nutritious, locally produced, safe foods.

To diversify income and ensure sustainability, the cooperative established a *Koseli Ghar* (local

product outlet), marketing 13 tons of local products worth NPR 0.7 million. Through the Hanku Community Seed Bank, it now conserves 58 landraces of 18 crops and maintains diversity blocks and resource farmers for seed conservation. In 2024–25, besides conservation, the cooperative sold two tons of local crop seeds worth NPR 0.6 million, benefiting more than 350 farmers through collective marketing. Further diversifying its services, the cooperative also established a grain processing and milling centre, reducing processing costs and women's workload while serving over 500 users in 2025.

Today, the Dhauligaad Agriculture Cooperative stands as a model of women-led, community-based conservation institution. The cooperative was recognised nationally on the 1st National Millet Day in July 2025 for its contribution, demonstrating that when indigenous crops are valued, marketed, and consumed locally, conservation and livelihoods can flourish together.



Mr. Gokarna Jaisi (member of cooperative) operating a threshing machine at Dhauligaad Agriculture Cooperative, Jumla, supported by the RERAS Project.

SHAPING HER OWN DREAM: A CASE OF RIMA CHAUDHARY



Rima Chaudhary presenting during GALS training.

Rima Chaudhary, 27, is a resident of Krishnapur Municipality-6, Thulo Singhpur, Kanchanpur, Sudurpaschim Province. She lives in a family of five whose primary source of income to run the family has long been a small tea shop. Although the shop supported the household, Rima aspired to contribute more meaningfully to the family's livelihood and financial stability. Traditional gender norms and stereotypes strongly influence household dynamics and most decisions are made by her father-in-law and husband, leaving her with limited opportunities to express her opinions or participate in family decision-making. Rima joined the 'Cultivating Change in a Warming World project'

as a member of a farmers' group, where she had the opportunity to participate in various trainings. Among them, the Gender Action Learning System (GALS) training has been transformative to her. In the training, she learned and practiced various visioning tools such as Golden Dream Journey (Sunaulo Sapana ko Yatra), Happy Family Tree (*Khusi Pariwar ko Briksha*), Leadership Empowerment Map (*Netritwa Shaasaktikaran Naksa*), and Multilane Highway (*Bahupath Rajmarga*). GALS adopts a drawing-based approach that removes educational barriers to learning and provides a common benchmark ensuring equal access for individuals who have

had fewer opportunities within formal education systems. GALS helped her reflect on her family's current situation, her future aspirations, and her potential contributions. Additionally, it also helped her realise the importance of communication and shared decision-making in strengthening family bonds and building a happy family. Today, Rima serves as an active GALS facilitator and guides others in the community to identify and prioritise actions that support and improve family well-being.

Rima gradually became more active not only within her household but also in her farmers' group and the community. Rima is an example of how change can be possible through individual effort. Inspired by her learning and motivation, she started a pig farm and constructed an improved cattle shed, goat shed, and poultry shed with project support. She expects to earn more than NPR 50,000 from selling pigs and piglets, and NPR 20,000 from

selling goats. Additionally, she has earned more than NPR 35,000 by working as a GALS facilitator and Agroecological Champion. Furthermore, Rima, as an agroecological champion, also supports community members in adopting agroecological technologies and practices in Singhpur Agroecological Model Village.

Rima shares that GALS transformed her mindset, strengthened her confidence, and motivated her to engage in economic activities to support her family. Her active engagement in the community has further enhanced her confidence and provided for recognition as a local resource person who facilitates community-level GALS training. She now serves as the Chairperson of a Local Mothers' Group and aims to inspire Tharu women to build confidence, participate in decision-making, and become financially independent.



Rima Chaudhary works at her commercial cucumber field using bio-mulching.

Major ORGANIZATIONAL HIGHLIGHTS

NATIONAL AGROECOLOGY ROADMAP OF NEPAL



Handover of the National Agroecology Roadmap of Nepal to MoALD during an official program.

One of the most significant organizational milestones this year was the successful development and formal handover of the National Agroecology Roadmap of Nepal, a strategic, policy-oriented framework designed to guide the country's transition towards equitable, resilient, and sustainable food systems, to the Ministry of Agriculture and Livestock Development (MoALD). This initiative positioned the organization as a leading convener and knowledge partner in advancing agroecology at national, provincial, and local levels.

The roadmap was developed through an inclusive, participatory, and multi-stakeholder consultation

process, engaging government institutions, research and academic institutions, civil society organizations, farmer networks, and development partners. The roadmap development was led by a dedicated Technical Working Committee (TWC) comprising experts from the Ministry of Agriculture and Livestock Development (MoALD), Nepal Agricultural Research Council (NARC), Civil Society Organizations, Farmers' Organization representatives, and leading agroecology practitioners.

The roadmap emphasises restoring and conserving agroecosystems to enhance productivity and resilience; ensuring equitable access and

ownership to ecological resources, inputs and technologies; diversifying livelihoods of smallholders through agroecological practices; strengthening agroecology-based value chains and markets; promoting sustainable, healthy and culturally appropriate foods; and harmonising and localising the institutional framework for inclusive food systems. These measures will contribute to the realization of the right to nutritious food for all, implementation of Nepal's Multi-Sector Nutrition Plan (MSNP), and achievement of national biodiversity and climate targets in alignment with the Sustainable Development Goals (SDGs). This approach ensured scientific rigor with Nepal's diverse agroecological, socio-economic, and cultural contexts.

To ensure ownership and evidence-based policy formulation, the organization facilitated national and provincial consultations across all seven provinces to capture region-specific priorities on climate resilience, biodiversity conservation, soil health, seed sovereignty, inclusive value chains, and farmers' rights. The consultations were complemented by a series of thematic expert webinars, key informants' interviews, and

focus group discussions with farmers, focusing on key agroecology dimensions across local, provincial, and national levels. Insights from these engagements were systematically documented and integrated while drafting the roadmap.

A major highlight was the organization's leadership in bridging science, policy, and practice. The roadmap aligns agroecology with Nepal's existing agricultural, climate, and biodiversity policies, including commitments to food security, climate action, and SDGs, while emphasizing social inclusion, gender equity, and the role of smallholder farmers, women, indigenous peoples, and youth in transition to the agroecological production system.

Overall, the Agroecology Roadmap initiative significantly enhanced the organization's credibility in policy advocacy, knowledge generation, and multi-stakeholder coordination, laying a strong foundation for future Agroecology programming, strategic partnerships, and action-oriented implementation to advance Nepal's transition to sustainable and resilient food systems.



A high-level consultation on the National Agroecology Roadmap was held on June, 2025 at MoALD, Kathmandu.

REGISTRATION OF LANDRACES IN THE NATIONAL SEED SYSTEM



Local landraces from left to right Lal Anadi rice, Hariyo Kauchin rice, Kalo Patle rice and Madale Kakro registered in National Seed System.

2024, LI-BIRD facilitated the registration of five unique local landraces under Schedule D of Seed Regulation 2013, a legal framework formulated under the Seed Act 1988 for the registration of local crop landraces in the national seed system to promote their conservation and sustainable use. The registration of these five landraces was led by community seed banks and farmers' organizations, with technical support from LI-BIRD, NARC-National Gene Bank, and Center for Crop Development and Agrobiodiversity Conservation (CCDABC).

The registered landraces include four rice landraces and one cucumber landrace. The rice landraces include "Joroyal Basmati" from Doti, "Lal Anadi" from Kanchanpur, "Hariyo Kauchin"

from Sindhupalchowk, "Kalo Patle" from Kaski, while "Madale Kakro" from Kaski is the cucumber landrace. These landraces possess unique and distinct agro-morphological traits and significant socio-economic values. "Joroyal Basmati" is an aromatic rice with peculiar long awns and is tolerant to waterlogging, while "Lal Anadi" is a sticky rice valued for its socio-cultural and medicinal importance. "Kalo Patle," characterized by a black husk and white grains, is well adapted to local conditions, with high market value. Likewise, "Hariyo Kauchin" is a coarse rice suitable for beaten rice and performs well under local environmental conditions. "Madale Kakro," a high-hill cucumber adapted to around 1,300 masl, is valued for its high productivity, superior taste, and strong market demand.

Custodian farmers from different community seed banks led the development, submission and presentation of registration proposals at the National Seed Board successfully. The Community Seed Bank Association coordinated the participating farmers' institutions, while LI-BIRD and the National Gene Bank strengthened their capacity and facilitated the process. The registration of local crop landraces under the leadership of farmers' organizations has been an important approach toward recognising community contributions to the conservation and promotion of agrobiodiversity.

Meanwhile, the respective local governments have taken ownership and supported the process by providing support letters for the registration of local crop landraces and by allocating resources to Community Seed Banks and cooperatives for quality seed production and dissemination of registered landraces. The

farmers' organization involved in the registration process was Jaibik Bibidhata Samrakshan Krishi Sahakari Sanstha Ltd. (Ghanteshwar Community Seed Bank), Doti; Anamol Krishi Sahakari Sanstha Ltd. (Anamol Community Seed Bank), Kanchanpur; Pingdada Sana Kishan Krishi Sahakari Sanstha Ltd. (Pingdada Community Seed Bank), Sindhupalchowk, and Pragatishil Krishi Sahakari Sanstha Ltd. (Annapurna Community Seed Bank), Kaski. These organizations now produce and supply quality seeds of the registered varieties as per demand, while maintaining source seeds with technical support from LI-BIRD, the Community Seed Bank Association Nepal (CSBAN), and relevant government agencies.

The registration of farmers' landraces marks a significant milestone in advancing the effective conservation, recognition, and sustainable utilization of Nepal's rich agrobiodiversity.



Exhibition of Annapurna Community Seed Bank during the National Agrobiodiversity Fair.

INVESTING IN HUMAN RESOURCES

STATUS OF WORKFORCE DIVERSITY IN LI-BIRD



Staff members celebrate Nepal's cultural richness through performances in traditional attires at LI-BIRD's Annual Gathering.

2024-25, LI-BIRD employed a total of 125 full-time staff (76 men and 49 women) and engaged 36 locally recruited part-time motivators to support project field level interventions. The workforce reflected Nepal's social diversity, with 77 staff from Brahmin, Chhetri, and Thakuri communities (62%), 28 Janajatis (22%), 9 Newars (7%), 7 Dalits (6%), and 4 Madhesis (3%). This composition demonstrates LI-BIRD's continued commitment to an inclusive staffing structure representing varied cultures and social backgrounds.

Recognising the need for targeted strategies to build and maintain a diverse workforce, the organization continues to promote GESI-responsive staffing across all levels. While attracting women to the senior and executive positions remains a challenge, priority is given to recruiting women at the mid-level manager position by strengthening their leadership capacity through intensive coaching and mentoring. Internal platforms such as Team Leaders' Meetings and Extended Management Committee Meetings serve

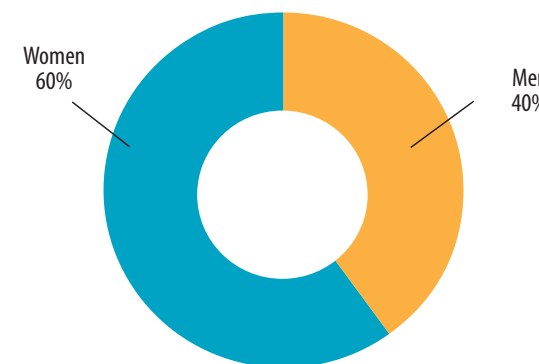
as in-house leadership development spaces, strengthening staff's decision-making skills and readiness for senior roles and responsibilities.

LI-BIRD continues to prioritise candidates from marginalized and discriminated groups, including women, Dalit, Janajati, Madhesi/Terai, and other minority communities, through its internship programmes, supporting fresh graduates with opportunities to learn, grow, and enhance their competitiveness in the professional world. Under the Memorandum of Understanding (MoU) with Far Western University (FWU) and Agriculture and Forestry University (AFU), LI-BIRD enrolled 10 agriculture undergraduates in 2025. From February and August, these interns successfully completed their thesis research across LI-BIRD's multiple projects, including SAKSHAM, LREP, DI-Pollination I, CRA II, and Paristhitiyantra, gaining valuable practical experience to strengthen their professional growth.

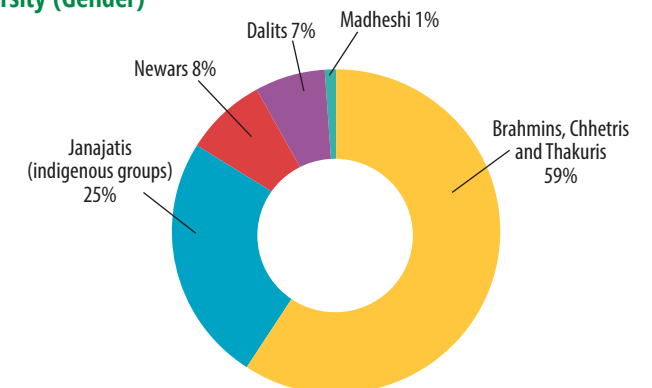
LI-BIRD promotes an inclusive workplace by fostering assimilation among staff from diverse communities and creating opportunities for capacity development. Recruitment of staff from disadvantaged groups and remote areas has strengthened organizational diversity and set positive examples within their respective communities, while contributing to inclusive programme planning, innovation, and enhanced organizational credibility among stakeholders and development partners. Alongside programme-based capacity-building initiatives, organization-wide capacity-building events were conducted this year, including Training of Trainers for Officer-Level staff and Social Mobiliser training for Technical Assistants through both physical and virtual platforms. Furthermore, LI-BIRD organised its first annual LI-BIRD Symposium that served as an internal platform for knowledge sharing, cross-learning, and documentation of the diversity of

research across its programmes, strengthening the organization's research, knowledge management, and capacity-building impact pathway under the Strategic Plan 2030.

Operating in geographically challenging and remote areas, LI-BIRD remains committed to safeguarding staff welfare while aligning its work with government priorities, funding opportunities, and community needs. While the organization contributes to the Social Security Fund (SSF), which provides medical support, access to empaneled hospitals in remote regions is limited and coverage remains narrow. To address this gap and ensure the health and well-being of staff and their families, LI-BIRD has introduced comprehensive health insurance. This complementary coverage provisions reliable healthcare services for employees and their dependents, reinforcing LI-BIRD's commitment to staff welfare.



LI-BIRD's workforce diversity (Gender)



LI-BIRD's workforce diversity (Ethnicity)

Financial HIGHLIGHTS 2024/25

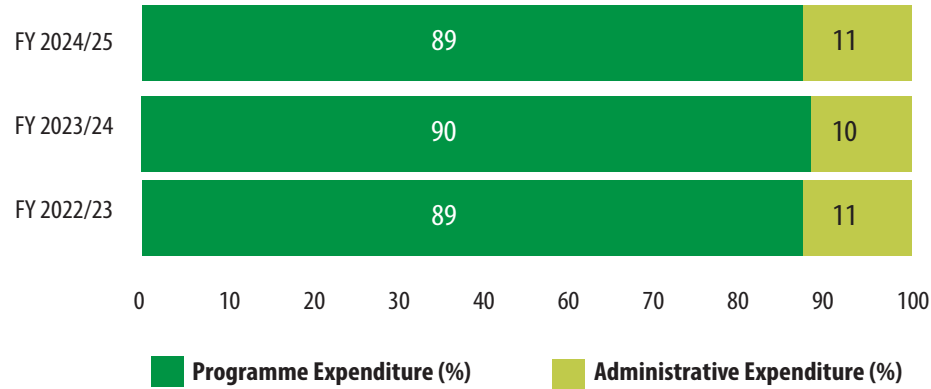
The total budget of LI-BIRD in the FY 2024/25 amounted to NPR 323,696,626, of which, the actual expenditure amounted to NPR 295,876,106, with the overall burn rate of 91% of the total expenditure, 89% was spent in programme activity, while 11% was utilized to cover the administrative expenses.

LI-BIRD received financial support for its research and development work from a range of donors. In the FY 2024/25, four projects were completed, eight new projects were secured, and a number of pipeline projects were designed and/or negotiated. The status of completed, new, ongoing, and pipeline projects are summarized in Table below.

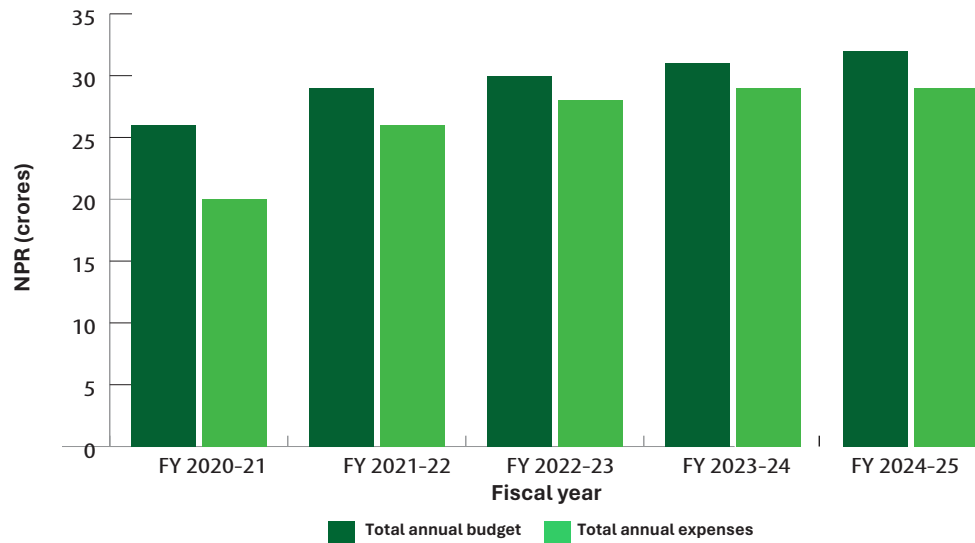
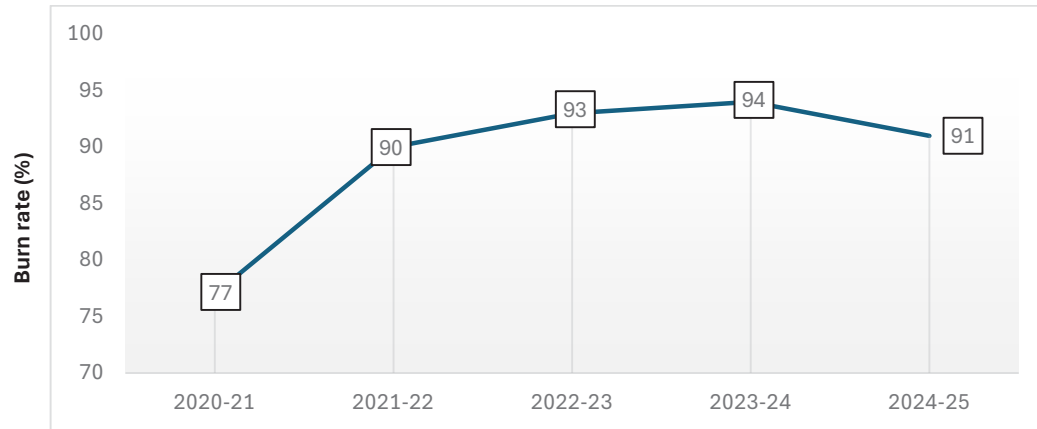
Project	Funding Agency	District
Completed Projects		
Scaling Up Climate Resilient Agriculture for Sustainable Livelihood of Smallholder Farmers in Sindhupalchowk and Kaski Districts	Bread for the World (BftW)	Kaski and Sindhupalchowk
FSN-IL– Empowering and Innovative Designing for Protecting Nutrient Dense Food: Rural Market Development	IDE Nepal	Kaski
Contract for global hunger index report 2024 launch event	Welthungerhilfe	
Building Resilience of Agro-Ecosystem and Community Empowerment Implemented in Ten Municipalities of Sudurpaschim Province	International Center for Integrated Mountain Development (ICIMOD)	Bajura, Doti and Kailali
New Projects		
Scaling Up Climate Resilient Agriculture for Sustainable Livelihood of Smallholder Farmers in Nepal, continuation	Bread for the World (BftW)	Kaski, Sindhupalchowk and Syangja
Cultivating Change in a Warming World	Oxfam in Nepal	Dailekh and Kanchanpur
Empowered communities and CSOs for inclusive nutrition governance in the hilly and mountain regions of Western Nepal	European Union	Bajura and Achham
Empowering Communities for Sustainable Change in Resilience, Adaptation, and Inclusion in Nepal	Dan Church Aid	Dhanusha, Mahottari, Sarlahi, Rautahat, Dang, Kapilbastu and Banke

Project	Funding Agency	District
Promoting GESI responsive agroecological practices as Nature-based Solutions (NbS) in Humla in Nepal	ICIMOD	Humla
Empowering Women through Skills and Entrepreneurship Development in Godawari Municipality	IDE Nepal	Lalitpur
BAYER's-SIF-Promoting Resilience and Enterprises Development through utilization of Natural Resource in Nepal (PRERNA)	IDE Nepal	Kaski
Renewable Energy Access for Livelihoods in Fragile Buffer Zones Phase 2 (REALIZE 2)	Renewable World	Salyan and Surkhet
Ongoing Projects		
Enhancing Knowledge and Capacities of Local Stakeholders to Strengthen Policy Environments Enabling Agroecology in the Himalayas	International Federation of Organic Agriculture Movements	National level project
Livelihoods And Resilience Enhancement Project	Norwegian Agency for Development Cooperation (NORAD) and the Development Fund, Norway (DF)	Bardiya, Kailali and Humla
De-risking The Transition to Sustainable, Climate Resilient Agricultural Models and Safeguarding Food Production from Climate Shocks and Stresses in Humanitarian Contexts (SAFE)	DanChurchAid	Bardiya
Green Karnali - Climate and Gender Responsive Resilient Agriculture and Enterprises in Karnali River Basin	DanChurchAid	Achham, Dailekh and Surkhet
Renewable Energy for Resilient Agri-food System (RERAS)	United Nations Development Programme (UNDP)	Bajura, Sindhuli, Jumla
Strengthening Capacity of Smallholder Farmers for Resilient Livelihoods (SAKSHAM)	Finnish Evangelical Lutheran Mission (FELM)	Doti and Kanchanpur
Partner Investment Fund	Oxfam in Nepal	LI-BIRD
Paristhiti Yantra	Katholische Frauenbewegung (Kfb)	Kaski
Embedding Sustainable Pollination Management into Nepalese Agricultural Systems	University of Bristol	Jumla
Multihazard Early Warning For locally led Anticipatory Action	Welthungerhilfe	Surkhet
Building capacity of women farmers in climate resilient agroecological farming practices	DKA Austria	Surkhet and Jumla
The Green Evolution: Pathways to transforming food system	Welthungerhilfe	Surkhet and Dailekh
Gift Goat Project	Danchurchaid	Achham, Dailekh and Surkhet

Programme vs Administrative Expenditure



Resource Mobilization Trends



Financial Statement of FY 2024/25

Local Initiatives for Biodiversity, Research and Development (LI-BIRD) STATEMENT OF FINANCIAL POSITION As at 32 Ashadh 2082 (16 July 2025)

Particulars	Note	Amount in NPR	
		Current Year	Previous Year
ASSETS			
Non-Current Assets			
Property, Plant and Equipment	4.1	48,158,591	39,715,993
Total Non-Current Assets		48,158,591	39,715,993
Current Assets			
Restricted Funds bank balance	4.2	37,016,622	35,980,620
Cash and cash equivalents	4.3	71,104,528	49,307,446
Accounts receivable	4.4	1,949,751	2,042,600
Advance and Deposits	4.5	609,722	975,457
Total Current Assets		110,680,623	88,306,123
Total Assets		158,839,214	128,022,116
LIABILITIES AND RESERVES			
Accumulated Reserves			
Unrestricted Funds/accumulated surplus	4.6	47,320,920	47,974,245
Designated Funds	4.7	22,213,210	20,949,665
Restricted Funds	4.8	44,343,723	22,189,993
Core Funds	4.9	13,458,650	13,374,527
Capital Reserve	4.1	21,137,565	11,953,829
Total Accumulated Reserves		148,474,068	116,442,259
Non-Current Liabilities			
Gratuity		1,420,475	1,267,637
Total Non-Current Liabilities		1,420,475	1,267,637
Current Liabilities			
Accounts payable	4.10	7,376,958	9,008,649
Staff and field office payable	4.11	1,567,713	1,303,572
Total Current Liabilities		8,944,671	10,312,221
Total Liabilities		10,365,147	11,579,858
Total Liabilities and Reserves		158,839,214	128,022,116

The Notes on accounts form an integral part of the financial statements.

Pratap K. Shrestha, PhD
Chairperson

Bharat Bhandari
Executive Director

Ramkali Khadka
Member/Treasurer

Laxmi Gurung
Head of Admin & Finance

Pratap P. Pradhan
Partner
PP Pradhan & Co.

Date: 18 September 2025
Place: Pokhara, Kaski

The external audit was performed by PP Pradhan & Company 'Class A' Chartered Accountants.
The financial statements were approved by the Executive Board endorsed by Annual General Assembly of LI-BIRD.

PUBLICATIONS IN ENGLISH

- Bhatta, K., Sipkhan, P. R., Bhusal, B., Khatri, L., & Dhakal, R. (2025). Performance Evaluation and Trait Association Analysis of Proso Millet Genotypes in Bajura District, Nepal. *Agriculture Development Journal*, 18(1), 82–94. <https://doi.org/10.3126/adj.v18i1.82090>
- Gautam, T., Mandal, I., Rijal, RK. & Poudel, N. (2025). Stories of Changes. LI-BIRD, Pokhara.
- GC, S., Rana, R. B., Bishwokarma, P., & BK, B. (2024). Adoption of Climate Resilient Agro-Ecological Practices in the Karnali River Basins. *Journal of Agriculture and Resource Management*, 1(1), 163–178.
- Joshi, B. K., Prasad, R. C., Gurung, R., Gautam, S., Subedi, A., Adhikari, A. R., ... Gauchan, D. (2025). Tradition of cultivating bean mixture for multiple benefits and sustainable production system in mountain agriculture : Bean Mixture Cultivation for Sustainable Mountain Farming. *SAARC Journal of Agriculture*, 22(2), 209–226
- LI-BIRD. 2024. National Workshop on Pollination and Pollinators. Local Initiatives for Biodiversity, Research and Development (LI-BIRD), Nepal.
- LI-BIRD (2024). Annual Report 2023/24. Pokhara, Nepal: LI-BIRD
- Mandal, I. (2024). Working Procedure for disabilities inclusion in SAKSHAM Project. Local Initiatives for Biodiversity, Research and Development (LI-BIRD), Nepal.
- Neupane, D., Basnet, S., Timberlake, T., Sapkota, S., Devkota, K., Neupane, S. P., & Shrestha, S. (2025). *Farmers Field School Manual on Pollination Management*. Pokhara: Local Initiatives for Biodiversity, Research and Development (LI-BIRD).

Local Initiatives for Biodiversity, Research and Development (LI-BIRD) STATEMENT OF INCOME AND EXPENDITURE For the Year Ended 32 Ashadh 2082 (16 July 2025)

Particulars	Notes	Amount in NPR	
		Current Year	Previous Year
INCOME			
Incoming Resources	4.12	295,761,048	293,679,441
Financial Income		2,305	746
Other Income		130,000	-
Total Income		295,893,352	293,680,187
EXPENDITURE			
Staff Cost/Expenses	4.13	24,116,898	21,079,163
Program Expenses	4.14	264,577,428	265,293,701
General Administrative Expenditure	4.15	6,430,142	6,469,571
Depreciation	4.1	751,638	822,675
Other Expenditure			
Total Expenditure		295,876,106	293,665,109
Net surplus/(deficit) before Taxation		17,246	15,078
Income Tax Expenses		-	-
SURPLUS/(DEFICIT) FOR THE YEAR		17,246	15,078
APPROPRIATION OF SURPLUS FOR THE YEAR			
Allocation to Reserves		-	-
Allocation to Endowment Fund		-	-

The Notes on accounts form an integral part of the financial statements.

 Pratap K. Shrestha, PhD
Chairperson

 Bharat Bhandari
Executive Director
 Ramkali Khadka
Member/Treasurer
 Laxmi Gurung
Head of Admin & Finance
 Pratap P. Pradhan
Partner
PP Pradhan & Co.


Date: 18 September 2025
Place: Pokhara, Kaski

PUBLICATIONS IN NEPALI LANGUAGE


- काजल कुशमी, राजेन्द्र ढकाल, कैलाश भट्ट, प्रगति राज सिपखान र ओशिन शर्मा । २०८१ । पातको थैला : तरकारी बालीको बेर्ना उत्पादनका लागि स्थानीय विधि । ली-बर्ड, पोखरा, नेपाल ।
- केशव कुमार विष्ट, हरिकृष्ण भट्टराई, प्रगतिराज शिपखान र कैलाश भट्ट । (वि.सं. २०८२) । पर्यावरणीय कृषिका लागि प्रकृतिमा आधारित समाधानहरू । ली-बर्ड
- कैलाश भट्ट, आमोद गौतम, कविता शाही र प्रगति राज सिपखान । २०८१ । माटो निर्मलीकरण : स्वस्थ बेर्ना उत्पादनमा सहयोगी । ली-बर्ड, पोखरा, नेपाल ।
- कैलाश भट्ट, कविता शाही, प्रगति राज सिपखान, लक्ष्मण खत्री र शंकर न्यौपान । २०८१ । बाली बिरुवामा कीट व्यवस्थापनका लागि पासो र ल्युरको प्रयोगका साथै केही घरेलु उपायहरू । ली-बर्ड, पोखरा, नेपाल ।
- तोया गौतम, इन्देश्वर मण्डल, राज कुमार रिजाल र नविन पौडेल । परिवर्तनका कथाहरू, २०८२ । ली-बर्ड, नेपाल ।
- प्रगति राज सिपखान, लक्ष्मण खत्री, ओसिन शर्मा, कैलाश भट्ट, राजेन्द्र ढकाल र शंकर न्यौपान । २०८१ । बायोचार : उर्वराशक्ति वृद्धिका लागि दिगो समाधान । ली-बर्ड, पोखरा, नेपाल ।
- बीउ उत्पादन, प्रशोधन, भण्डारण तथा बीउ प्रमाणीकरण: प्रशिक्षक स्रोत पुस्तिका कृषि व्यवसाय प्रवर्द्धन सहयोग तथा तालिम केन्द्र, सुन्दरपुर, कञ्चनपुर र जैविक विविधता, अनुसन्धान तथा विकासका लागि स्थानीय पहल (ली-बर्ड), नेपाल (वि. सं. २०८१) ।
- ममता पौडेल, जेनी श्रेष्ठ, विष्णु भुसाल र इन्द्र प्रसाद पौडेल । २०८१ । कालो पाल्ले धान : परिचय तथा खेती प्रविधि । ली-बर्ड, पोखरा, नेपाल ।
- रञ्जना दुवाल । २०८१ । अन्तरबाली खेती : प्रविधि एक, फाइदा अनेक । ली-बर्ड, पोखरा, नेपाल ।
- सारा बास्तोला, जेनी श्रेष्ठ, विष्णु भुसाल र इन्द्र प्रसाद पौडेल । २०८१ । हरियो काउचिन धान : परिचय तथा खेती प्रविधि । ली-बर्ड, पोखरा, नेपाल ।
- सुदरपश्चिम प्रदेशका बालीनालीका मुख्य रोग तथा कीरा व्यवस्थापन: प्रशिक्षक स्रोत पुस्तिका, कृषि व्यवसाय प्रवर्द्धन सहयोग तथा तालिम केन्द्र, सुन्दरपुर, कञ्चनपुर र जैविक विविधता, अनुसन्धान तथा विकासका लागि स्थानीय पहल (ली-बर्ड), नेपाल (वि. सं. २०८१) ।
- श्रेष्ठ पीताम्बर र बिष्णु ढकाल । २०८१ । सामुदायिक बीउ बैंक स्थापना तथा व्यवस्थापन तालिम निर्देशिका । ली-बर्ड, पोखरा, नेपाल ।

RADIO PROGRAMME

Radio Programme 'LI-BIRDko Chautari': All Episodes can be found at: <https://soundcloud.com/li-birdko-chautari>

VIDEOS

All videos can also be found at www.youtube.com/libird

 Find more publications at: <https://libird.org/publications/>

DEVELOPMENT PARTNERS AND FUNDING AGENCIES FY 2024/25



EXECUTIVE BOARD 2023-2026



Pratap Kumar Shrestha, PhD
Chairperson



Meeta Sainju Pradhan, PhD
Vice Chairperson



Beni Bahadur Basnet
Secretary



Ramkali Khadka
Treasurer



Lekhnath Dhakal
Member



Rajya Shree Sthapit
Member



Anju Joshi
Member



Local Initiatives for Biodiversity, Research and Development (LI-BIRD)

Head Office

PO Box 324, Pokhara, Kaski, Nepal
Tel 00977-61-576834, 585357
E-mail info@libird.org
Web www.libird.org

Programme Coordination Office

Sanepa, Lalitpur, Nepal
Tel 00977-01-5440330

